



MSA

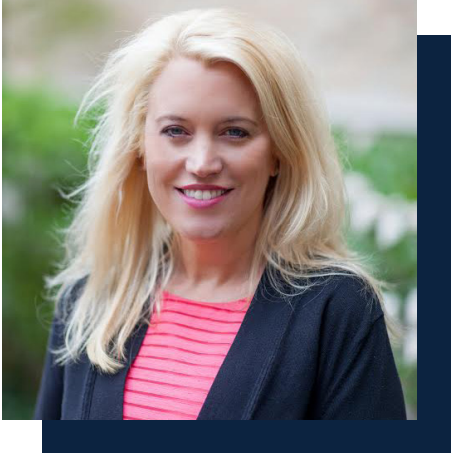
MASTER OF SCIENCE IN ACCOUNTANCY

2022 EMPLOYMENT REPORT | *GROW THE GOOD IN BUSINESS™*

LISA MICHAELS

Senior Associate Director

Mendoza Graduate Programs Career Development



“At Notre Dame Mendoza College of Business, we are excited to help our Specialized Master’s students **LEAD** (Learn, Engage, Act, Decide). Our career philosophy is centered around students’ learning about themselves and the marketplace, engaging with employers and alumni, taking action with personal branding and applications, and making decisions about their future endeavors. Through the Bridge to Success course and customized one-on-one coaching, our students are empowered to leverage their strengths, experiences, and values to maximize their potential for growing the good in business. The following metrics highlight the success of our past students and provide future students with a clearer understanding of what might be possible with their own career journey.”

Notre Dame’s Mendoza College of Business is uniquely positioned to develop leaders dedicated to growing the good in today’s business world. This employment report represents the hard work our students — these future leaders — put into their career development, creating opportunities that leverage their strengths, experiences and values to maximize positive impact.

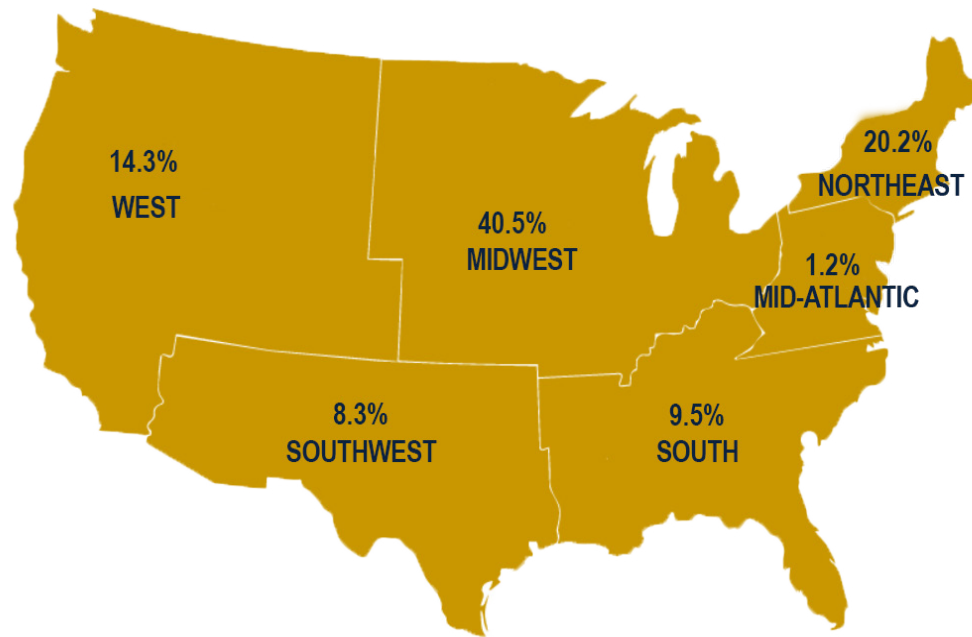
100%

**GRADUATES ACCEPTED FULL TIME OFFERS
WITHIN 6 MONTHS OF GRADUATION**

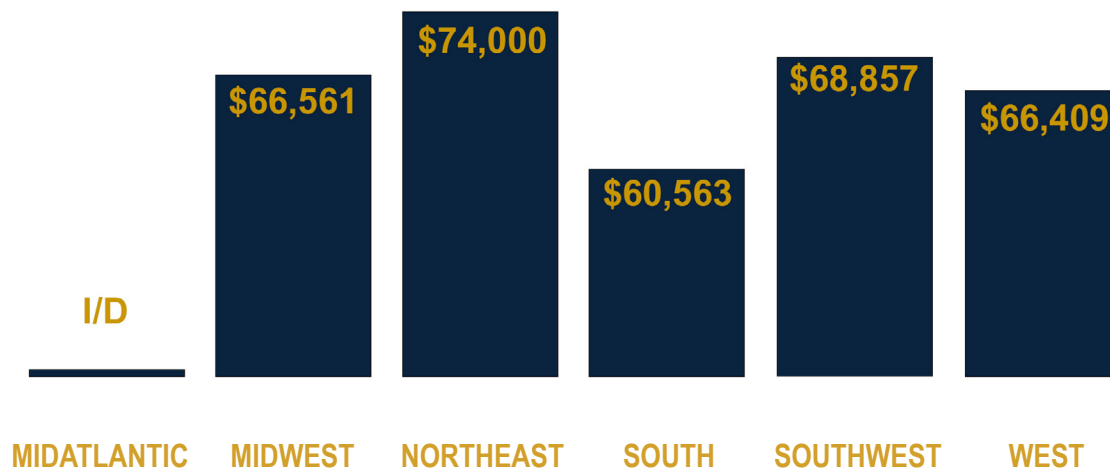
\$66k

AVERAGE BASE SALARY
ROUNDED TO THE NEAREST THOUSAND

FULL TIME EMPLOYMENT BY REGION



AVERAGE BASE SALARY BY REGION



2022 EMPLOYERS

Andersen Tax

BDO

Deloitte

Eide Bailly

EY

KPMG

Plante Moran

Protiviti

PwC

Workiva

FEATURED EMPLOYERS



EY



Deloitte.



protiviti®

COMPENSATION BY INDUSTRY & FUNCTION

INDUSTRY	% OF GRADUATES ACCEPTING FULL TIME EMPLOYMENT	AVERAGE BASE SALARY
Consulting	7.1%	\$71,400
Consumer Packaged Goods	1.2%	I/D*
Financial Services	83.3%	\$64,692
Real Estate	1.2%	I/D*
Technology	1.2%	I/D*
Other	6%	\$80,500

FUNCTION	% OF GRADUATES ACCEPTING FULL TIME EMPLOYMENT	AVERAGE BASE SALARY
Consulting	15.7%	\$75,308
Finance	83.1%	\$63,874
Information Technology	1.2%	I/D*

*I/D refers to instances with insufficient data. Specialized Masters Standard guidelines require a minimum of three data points for each category and that the number of data points is equal to or greater than one percent of full-time graduates seeking employment. Data points not meeting both requirements will still display the number of employed graduates, but will show "I/D" for all salary calculations.



2022 MASTER OF SCIENCE IN ACCOUNTANCY EMPLOYMENT REPORT

CONTACT recruitmendoza@nd.edu
mendoza-mscareers.nd.edu
(574) 631.8488

 UNIVERSITY OF NOTRE DAME | MENDOZA COLLEGE OF BUSINESS

